

REASONS FOR DISMISSAL

The following are some common reasons for dismissal. A student may also be dismissed for other health related issues.

- **Chickenpox/Breakthrough Chickenpox:**

A student may not return to school until all lesions are dry (usually 4-6 days after onset of rash).

- **Fever:** A student will be sent home for a fever of 100 degrees or higher. A student must be fever free for **24 hours without fever medication in order to return to school.**

- **Fifth's Disease:** A student must be **fever free for 24 hours without fever medication** in order to return to school.

- **Hand, Foot and Mouth Disease:** A student will not be allowed in school with draining hand lesions, blisters in mouth with drool or a fever of 100 degrees F or higher. A student may return to school when hand lesions are dry, drool free and **fever free for 24 hours without fever medication.**

- **Impetigo:** A student must be treated with a prescribed antibiotic **for 24 hours** in order to return to school.

- **MRSA (skin infection):** A student will be dismissed from school for open draining sores/boils that cannot be covered. The student may return to school if affected area is covered and is fever free and has been on a prescribed antibiotic **for at least 24 hours.**

- **Pediculosis (head lice):** A student will be dismissed if live lice have been found. The student will be able to return to school after appropriate treatment. The student and parent/legal guardian must report to the school health room upon return. The student will then be checked daily for the next 10 days. The student will not be allowed back to school if live lice are found.

REASONS FOR DISMISSAL

- **Rashes:** A student will be dismissed from school for a rash with fever and/or behavioral changes. A note from the health care provider is required in order to return to school.

- **Ringworm:** A student may return to school once a prescribed treatment from a health care provider has been started.

- **Scabies:** A student may return to school after a prescribed treatment from a health care provider has been started.

- **Strep Throat:** A student may return to school when fever free and has been on antibiotics for at least 24 hours.

- **Vomiting or Diarrhea:** A student will be dismissed from school. The student may return to school when symptom free (no vomiting, diarrhea) for at least 24 hours.

ORAL HEALTH SERVICES

Oral health care services are provided by a registered dental hygienist. A preventative examination of the teeth and gums for students in **Grade K through Grade 8** is performed on an annual basis. Dental cleanings are routinely performed on children with evidence of dental disease. A **permission slip must be signed and returned to school each year by the parent/legal guardian in order to receive oral health services.**



REMINDER:

Please check backpacks for messages from the school/health staff. For more health related information, contact the school health staff or visit the following websites: www.bbhd.org or www.aap.org or www.cdc.gov

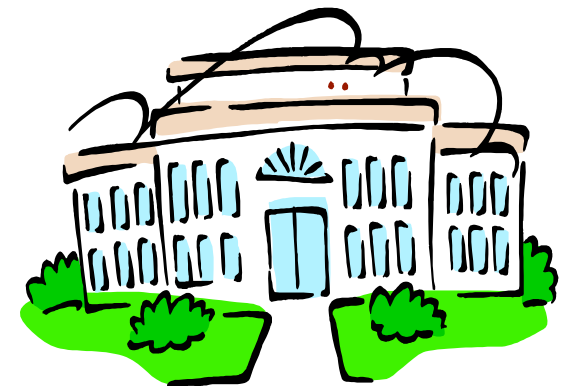
Rev. 1/2018



BRISTOL-BURLINGTON HEALTH DISTRICT

SCHOOL HEALTH SERVICES

Bristol School District



Bristol-Burlington Health District
240 Stafford Avenue
Bristol, CT 06010
Phone: 860-584-7682
Fax: 860-584-3814

Monday - Friday 8:00 am - 4:00 p.m.

Visit our website at www.bbhd.org
for forms and information.

HEALTH ASSESSMENTS



CT State Law requires that students have a health assessment / physical examination before entering school:

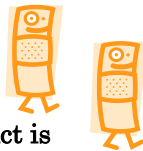
- **For new entrants**, the physical examination must be completed within 1 year (365 days) prior to the date entering school.

Student entering Kindergarten, a health assessment /physical examination must be completed within 1 year (365 days) prior to the date entering school.

- During the 6th grade, and as a requirement for **entrance to the 7th grade**, a health assessment/physical examination must be completed.

- During the 9th or 10th grade, and as a requirement for **entrance to the 11th grade**, a health assessment/physical examination must be completed.

- For students participating in sports, a health assessment **is required each year** and must be completed and returned to the school before the student can practice or play a sport. The health assessment is **only valid for 13 months from the date of the physical examination.**



The Bristol-Burlington Health District is a provider of *The Vaccines for Children Program* and has an Immunization Clinic.

Immunization Clinic Hours
Wednesdays (except holidays)
2:00 p.m. – 3:30 p.m.
By Appointment Only
Call the BBHD office for more information
at
860-584-7682

IMMUNIZATION REQUIREMENTS

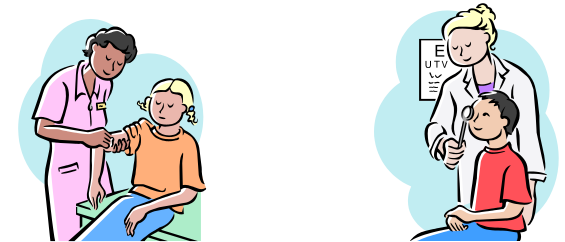
The State of Connecticut requires the following immunizations for school entry:

- **DTaP/Tdap** (Diphtheria, Tetanus, Acellular Pertussis): Four doses required for **Pre-Kindergarten & at least 4 doses with 1 dose that must be given on/after the 4th birthday for Kindergarten to grade 6.** Students who start the series at age 7 or older, only need a total of 3 doses. **Students entering grades 7-12 must have 1 additional booster dose of Tdap vaccine.**
- **Hepatitis A:** two doses given six calendar months apart for **all students in Pre-Kindergarten through grade 6.** The 1st dose must be given on/after the 1st birthday.
- **Hepatitis B:** 3 dose series is required with the last dose on/after 24 weeks of age and all students grades K- 12.
- **HIB (Haemophilus Influenzae Type B):** One dose is required on/after the 1st birthday *or* prior to the 5th birthday. It is not required for children over 5 years of age.
- **Influenza: Pre –Kindergarten ONLY-One dose required,** given between August 1 and December 31 each year for ages 24 months to 59 months. **Two doses** separated by at least 28 days **are required, if receiving flu vaccine for the 1st time.**
- **Meningococcal:** One dose required for grades 7 through 12.
- **MMR (Measles, Mumps, Rubella):** Two doses are required. **One dose given on/after the 1st birthday** and a 2nd dose given at least 28 days after 1st dose. **The 2nd dose is required for all students Kindergarten through grade 12.**
- **Polio:** Three doses or more, with **3 doses required for Pre-Kindergarten & 1 dose given on/after 4th birthday** for Kindergarten through grade 12.
- **Pneumococcal:** One dose is required on/after the 1st birthday for children **less than 5 years of age in Pre- K and Kindergarten.**
- **Varicella (Chickenpox): One dose required** on/after the 1st birthday for **Pre K.** The 2nd dose separated by at least 3 months is **required for Kindergarten through grade 12.** If a student has a history of a diagnosis of Varicella or Herpes Zoster, then a written statement signed and dated by a health care provider is required.

MEDICATION IN SCHOOL

A *Medication Authorization Form* is necessary for **any** medication (including any over the counter medicinal preparation) to be given/taken during school hours. **The form must be filled out properly and signed by both the parent/legal guardian and the health care provider.** Medication Authorization **Forms are available in the school health room and BBHD website at: www.bbhd.org.**

Prescription medication **must** be in the original, pharmacy prepared container and labeled with the student's name, medication name, strength, dose, and time it is to be given. A request may be made to the pharmacist to prepare two separate bottles, if medication is given at home and at school. Over the counter (OTC) medicinal preparations must be in an original, unopened container. Only a 90-day supply is allowed in school. **Medication must be brought to school and picked up at the end of the school year by a parent/legal guardian.**



HEALTH SCREENINGS

The following screenings are provided annually:

- **Pediculosis (head lice):** Preschool through grade 5.
- **Vision:** Kindergarten, grade 1, and grades 3 through 5.
- **Hearing:** Kindergarten, grade 1, and grade 3 through 5.
- **Scoliosis:** Females in grades 5 & 7. Males in grade 8.

